

DWP

Department for  
Work and Pensions

# Outline

---

Work: the best solution to poverty?

- the labour market
- welfare and work
- is it working?

# The UK labour market context

---

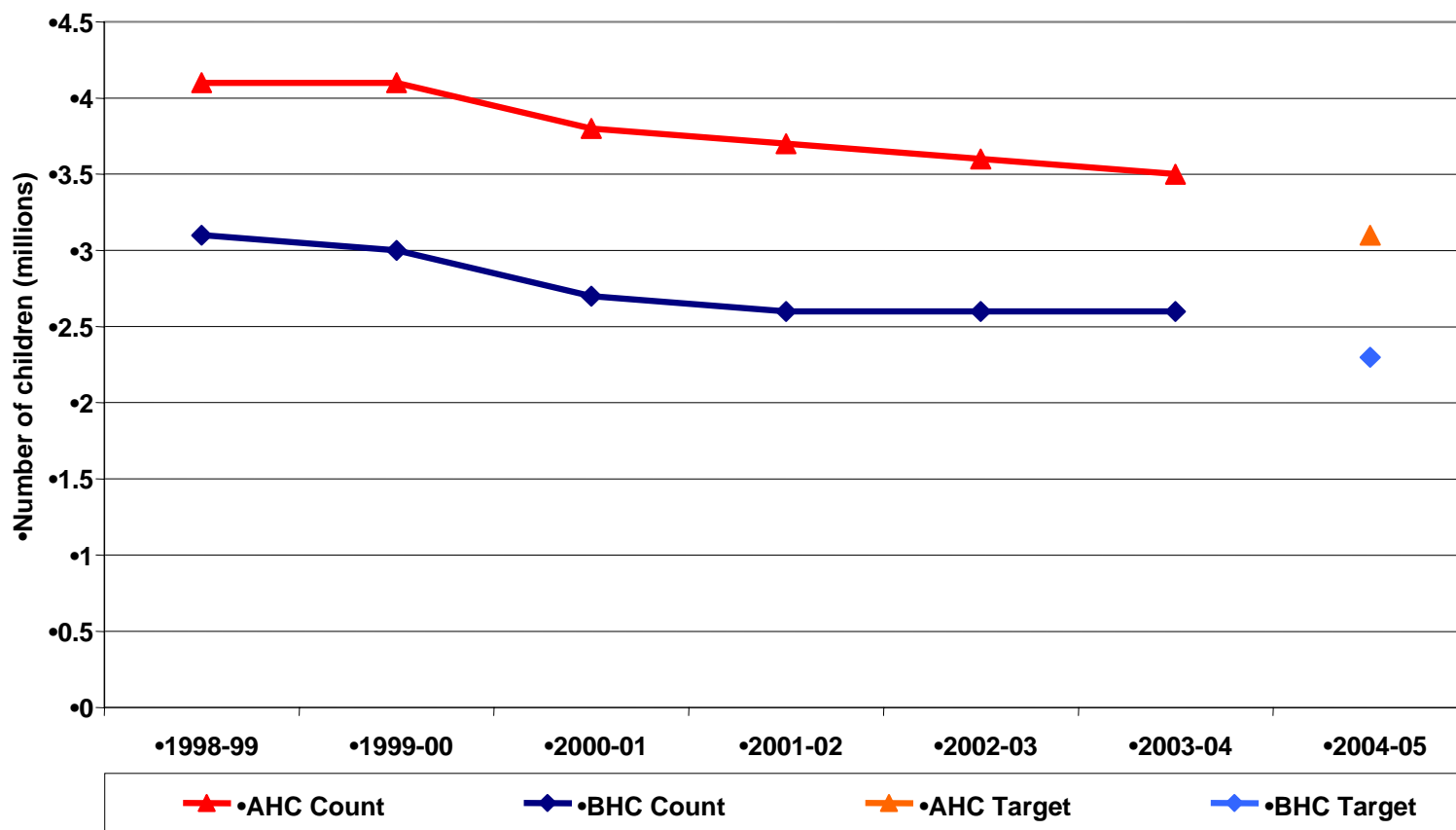
- UK is a high employment country
- ....with a wide range of work opportunities
- ....and a successful track record on active labour market policies

# We've achieved a lot..

---

- employment up 2 million since 1997 with quickest rises among disadvantaged groups
- lowest levels of claimant unemployment for 30 years
- lone parent claimants down 20%, IB claimant numbers now falling
- Action on poverty...

# Number of children living in relative-low income households 1998-99 – 2003-04

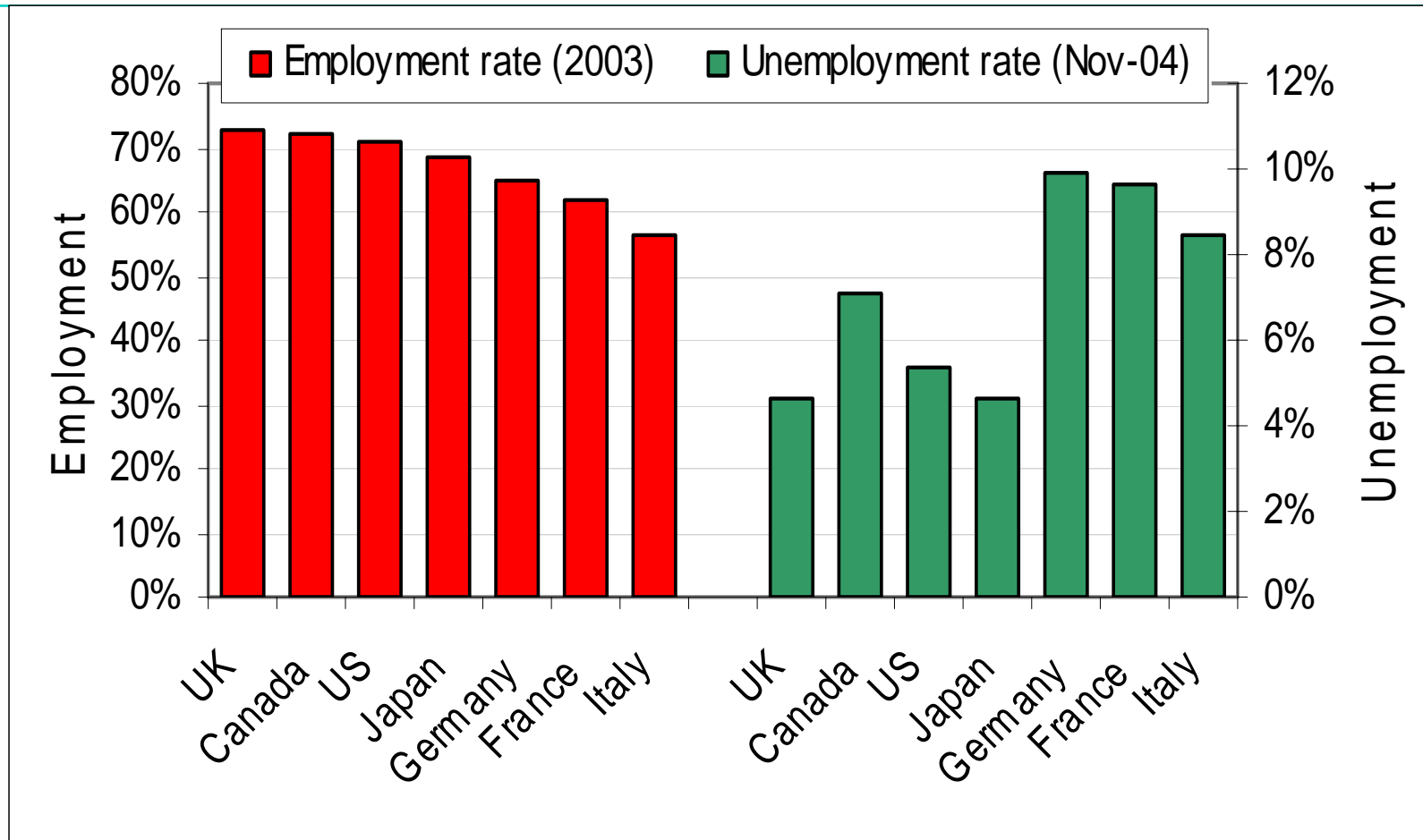


# Child poverty

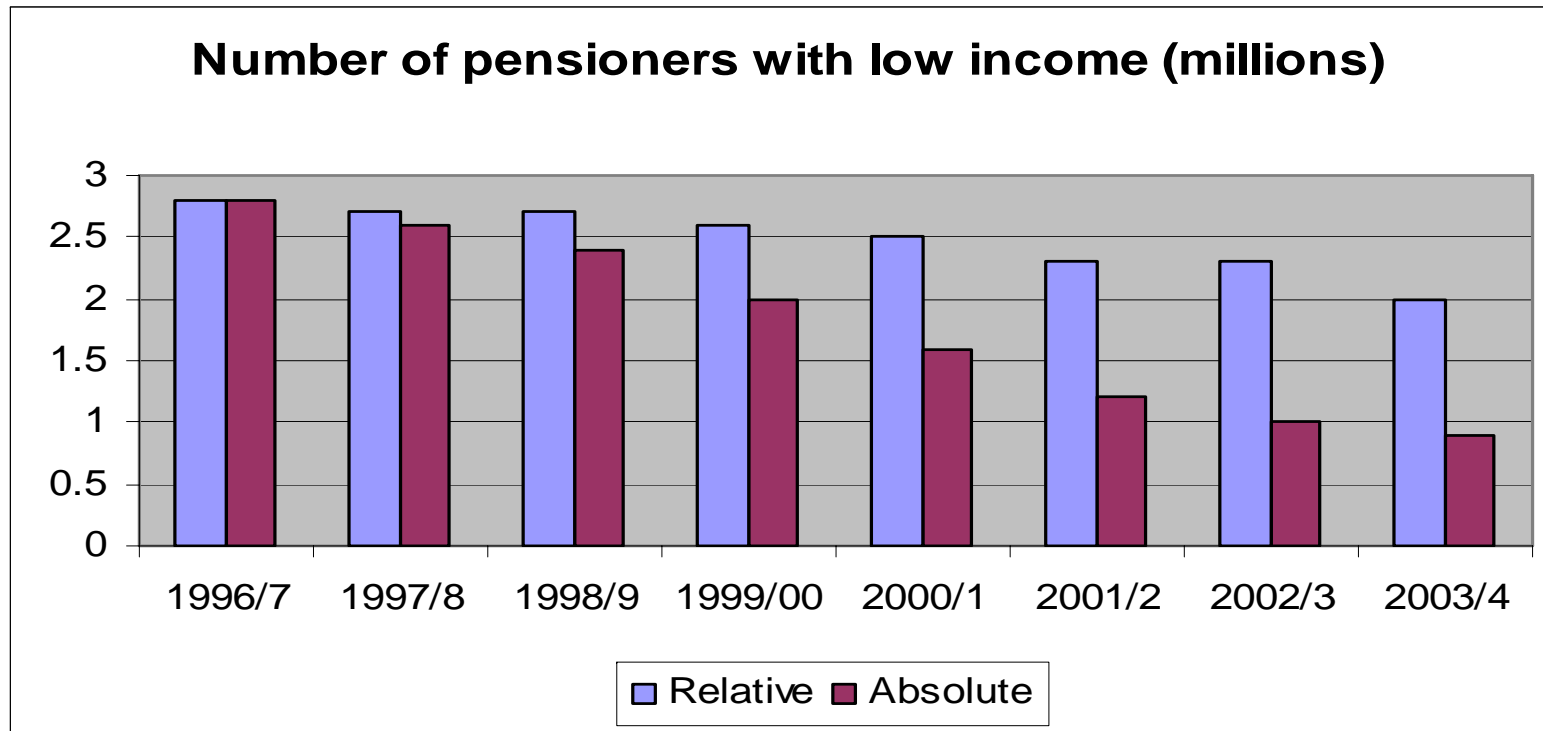
---

- July 2002 - Announcement of a target to reduce child poverty by a quarter between 1998-99 and 2004-05, as a contribution to halving it by 2010 and eradicating it by 2020
- July 2004 – A new target was set to halve child poverty by 2010-11 from its level in 1998-99, on the way to eradicating child poverty by 2020
- Strategy is to ensure decent incomes by providing work for those who can and security for those who cannot, with financial support for all families and more help for those who need it most when they need it most.

## Our welfare to work policies have helped in giving the UK one of the best labour markets in the World



The worst of pensioner poverty has been eliminated with nearly 2 million pensioners lifted out of poverty since 1997



# Government's overall strategy

---

- work as the best route out of poverty
- supported by a comprehensive welfare state
- active labour market policies, rights and responsibilities
- particular focus on children

# Key components

---

- ensuring work pays (NMW, tax credits)
- Jobcentre Plus integrated delivery of welfare to work policies
- personal advisers and work focused interviews, New Deals
- strong partnerships (cross government and locally)

# Much achieved, more to do...

---

- child poverty elimination
- reduction of children in workless households
- worklessness among particular groups and areas
- a long term aim of 80% employment